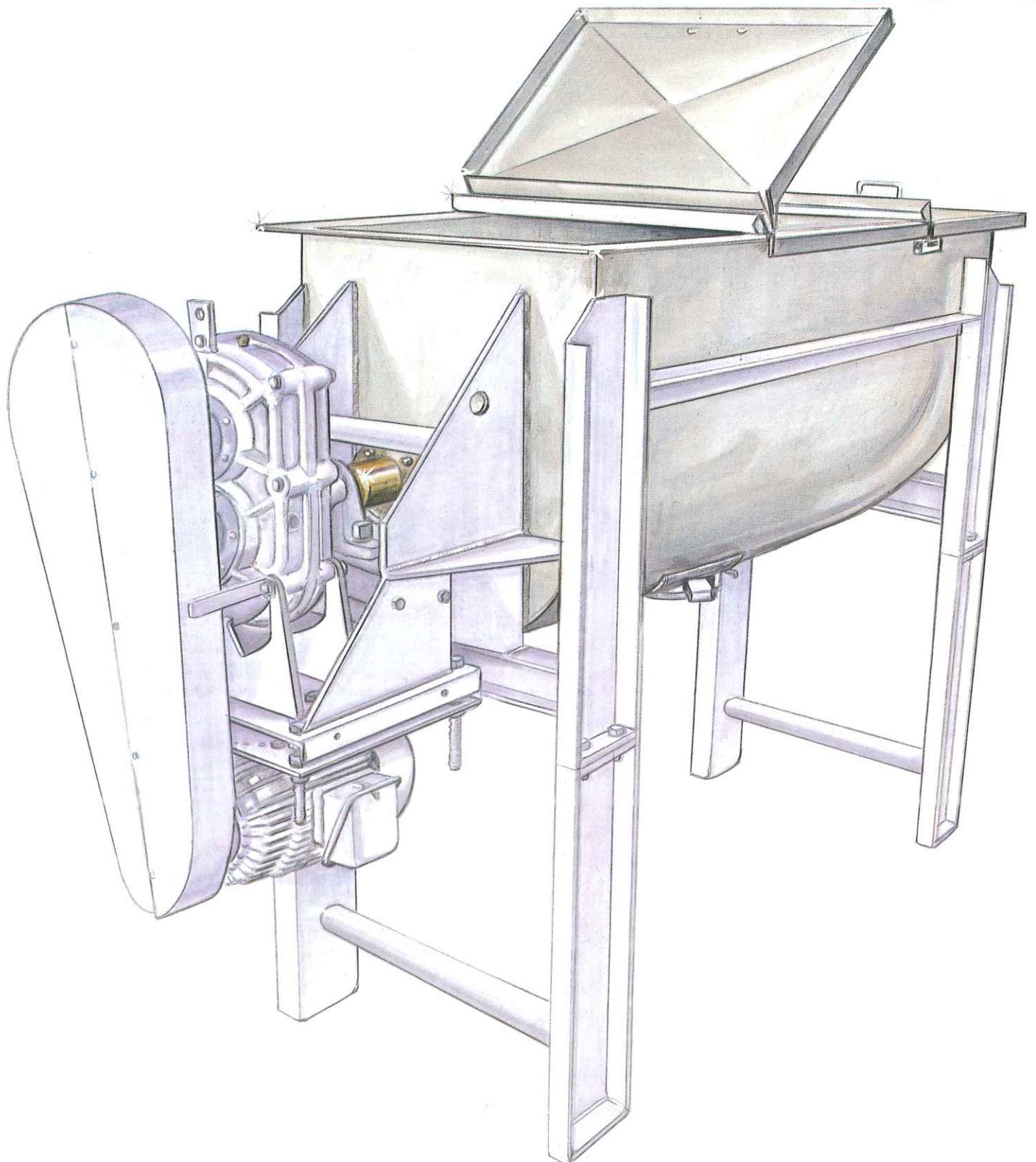


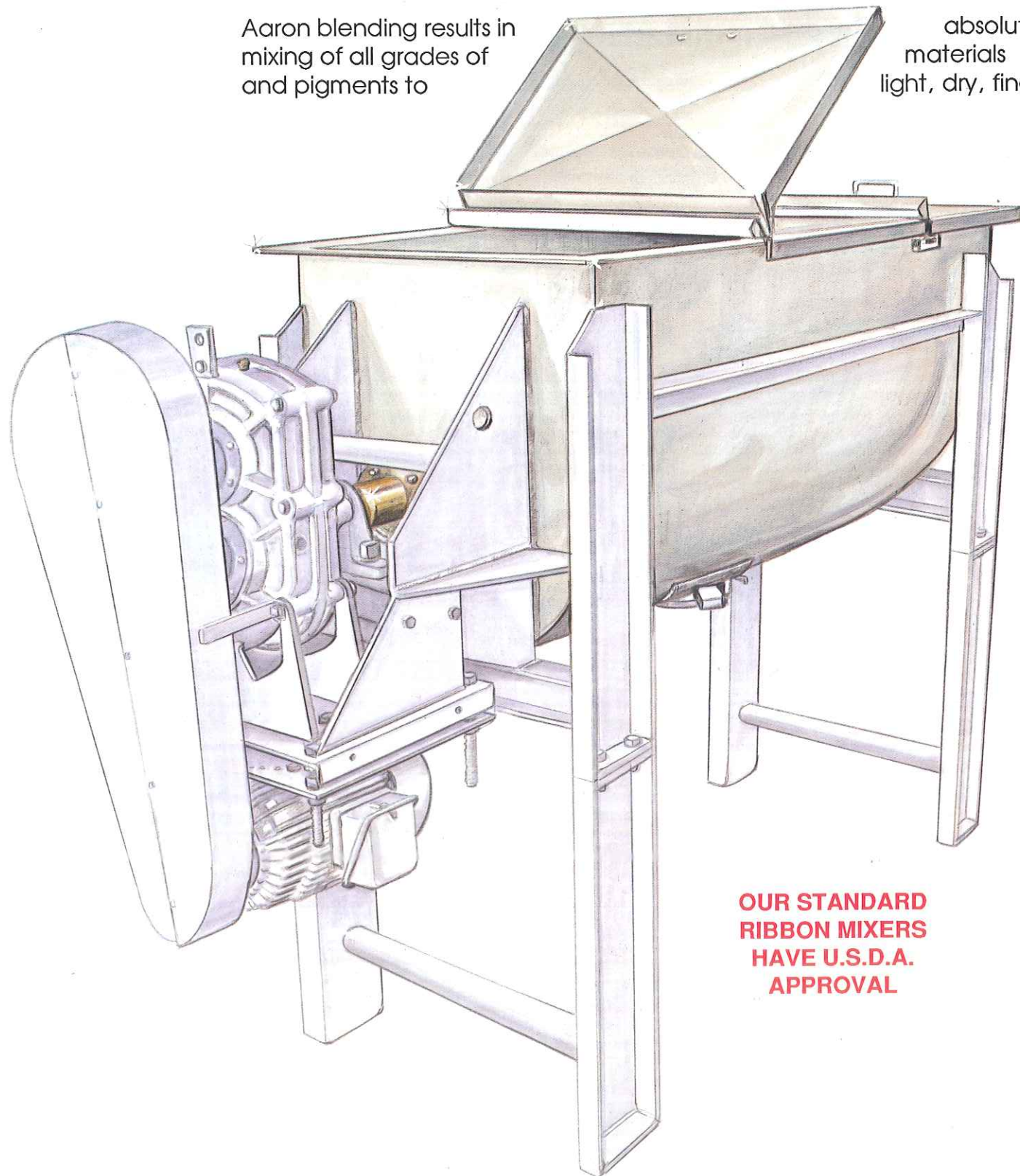
PROCESS EQUIPMENT
COMPANY, INC.

ribbon mixers



Ribbon Mixers . . . First in Quality . . . First in Dependability by **AARON**

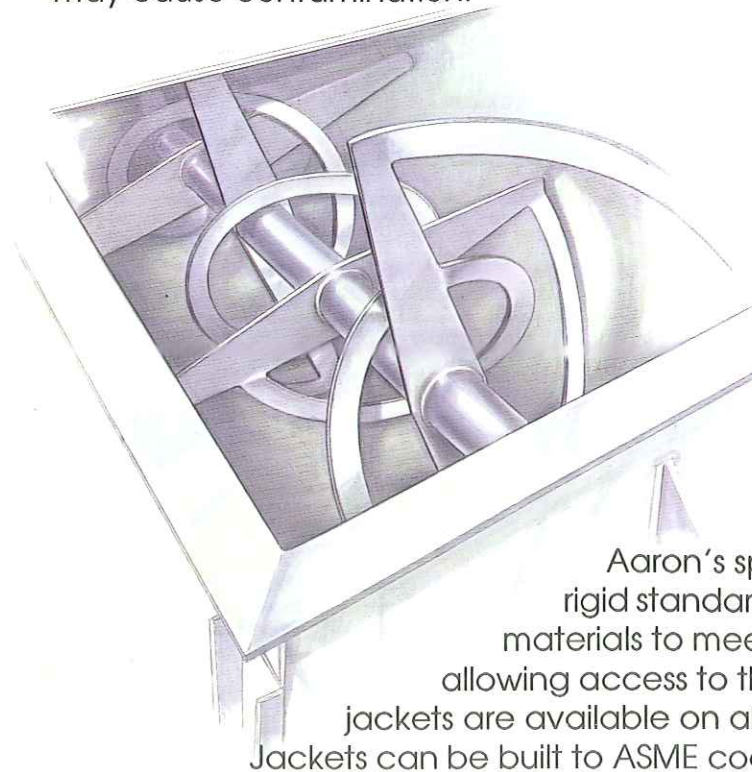
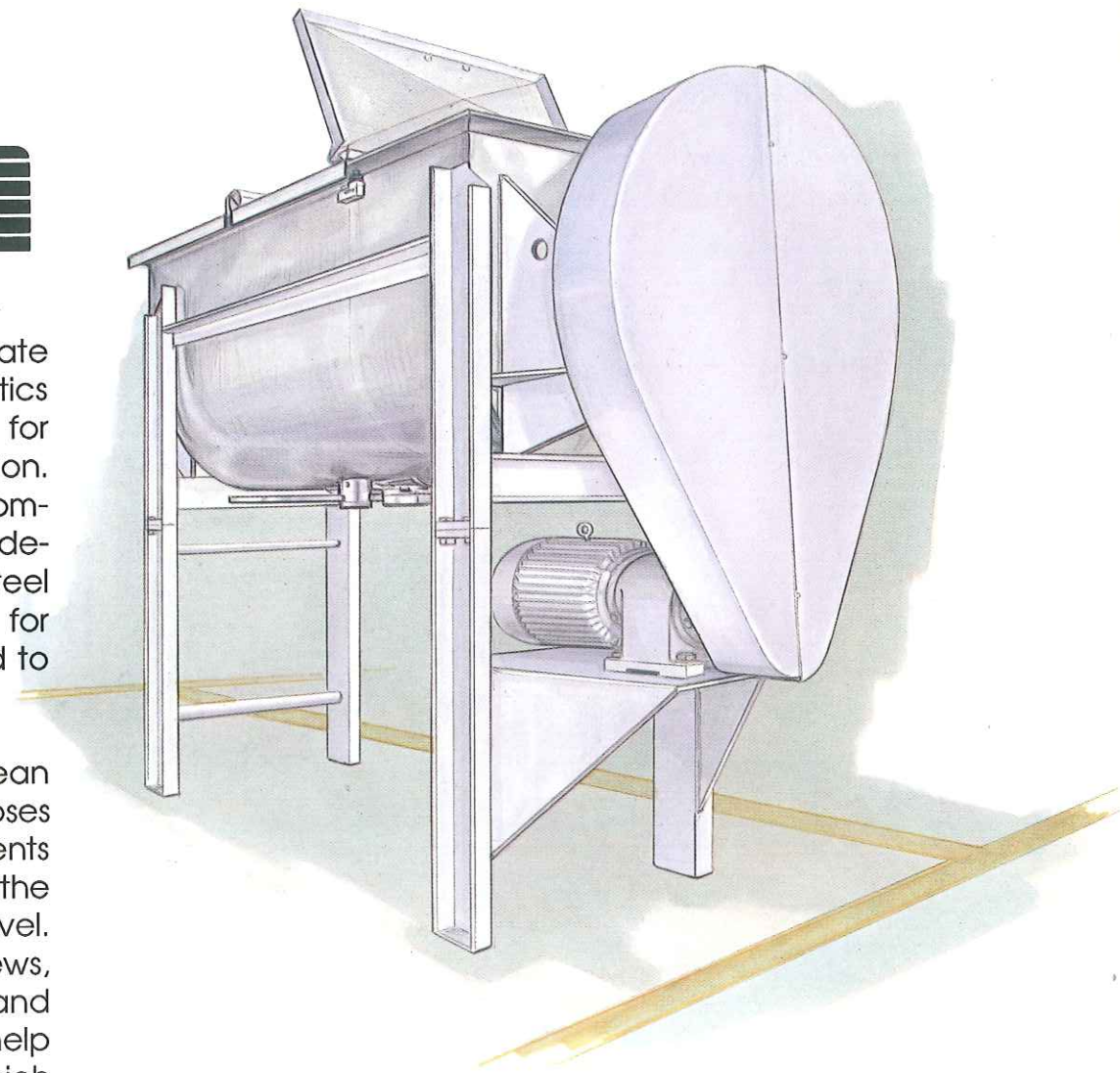
Aaron blending results in mixing of all grades of and pigments to



**OUR STANDARD
RIBBON MIXERS
HAVE U.S.D.A.
APPROVAL**

absolute uniformity and homogeneous, accurate materials from granular, heavy density cakes, plastics light, dry, fine powders. Engineered and constructed for rugged, heavy-duty production. Aaron Process Equipment Company Mixers are completely dependable. Their tough, all-steel construction is fully welded for maximum strength, rigidity and to meet sanitary requirements.

All machine surfaces are clean and smooth for sanitation purposes and minimal waste. Contents can't cake or stick because the chamber interior is slick and level. There are no projecting screws, nuts, bolts, pockets or ledges and all corners are rounded to help eliminate material build-up which may cause contamination.

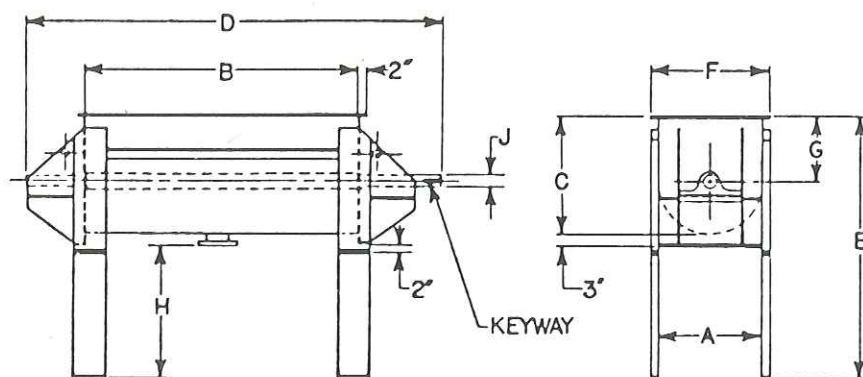


Anti-friction bearings in self aligning pillow blocks assure a free, smooth and quiet running operation. Discharge of the finished batch is quick and clean through a choice of positive shear gate or butterfly valve that provides for complete or throttle discharge. Other types of discharge valves are also available. The Aaron standard of highest quality and precision engineering is built into every mixer. Aaron Ribbon mixers unique features make them the leaders in the field.

Aaron's split gland is the best available design to meet the most rigid standards for sanitary servicing. Available with various packing materials to meet your requirements. Glands open into four pieces allowing access to the shaft and the end plate for easy cleaning. Dimpled jackets are available on all Aaron Mixers for steam, hot water or oil, if specified. Jackets can be built to ASME code.

AARON ribbon mixers

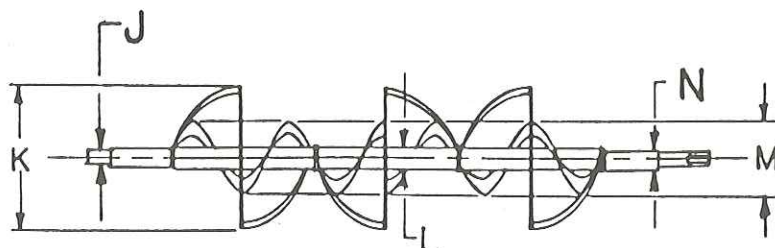
SPECIFICATIONS



TROUGH diagram

Aaron Ribbon Mixers unique features make them the leaders in the field. These special adaptations fulfill every need for blenders.

- Aaron's Split Packing Gland
- Reinforced Post Design
- Slide Paddle Discharge Gate
- Special 3 Piece Cover, Designed With No Hinges



AGITATOR diagram

CU. FT.	GAL.	A	B	C	D	E	F	G	H	J	K	L	M	N
4	30	18	24	22	50	37	20	13	13½	1-15/16	17½	2%	9	2-1/4
14	105	24	48	28	86	69	28	16	38	1-15/16	23½	2¼/40	12	2-3/4
24	180	26	66	30	105	71	30	17	38	2-15/16	25½	3/40	13	3-1/2
36	270	30	78	34	117½	75	34	19	38	3	27½	4/40	15	3-7/16
55	410	34	90	39	129½	80	38	22	38	3-7/16	33½	6 x ¾	17	4-7/16
66	470	36	96	41	149½	82	41	23	38	3-15/16	35½	6 x ¾	18	4-7/16
80	600	40	96	48	149½	89	44	28	38	3-15/16	39½	6 x ¾	20	4-15/16
100	750	48	96	54	147½	95	52	30	38	4-7/16	47½	8 x ½	24	5-7/16
150	1125	48	144	54	197½	95	52	30	38	4-15/16	47½	8 x ½	24	5-7/16
200	1500	54	144	60	197½	101	58	33	38	4-15/16	53½	8 x ½	27	5-15/16
300	2250	66	144	72	197½	109	70	39	38	4-15/16	65½	10 x ¾	33	6-15/16

350 CU. FT. AND UP BY REQUEST ONLY!

AARON PROCESS EQUIPMENT COMPANY WILL BUY OR TAKE AS TRADE-IN YOUR OLDER OR SMALLER MIXER....WHAT OTHER MANUFACTURER WILL OFFER AS MUCH?

AARON
PROCESS EQUIPMENT COMPANY

P.O. Box 530 • Bensenville, IL 60106 - 0530

(708) 350-2200

Fax# 1-708-350-9047 • Telex 28-9454